



Retreads with a Difference

Rebuilt Tough

Tread Catalogue



Elgi Rubber Company Limited

S.F No. 164/2, Pollachi Road, SIDCO Industrial Estate, Kurichi - Coimbatore - 641 021 - India
+91 (422) 232 1000 - info@in.elgirubber.com - www.elgirubber.com

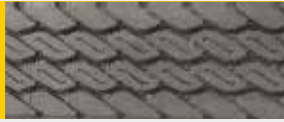
Truck & Bus - Radial Tyres








All Wheel

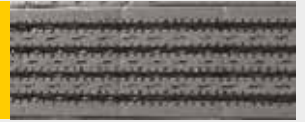






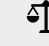
RAY



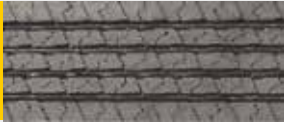
 Tyre Size	 Width in mm	 NSD in mm	 Length in mm	 Avg wt / belt in Kg
10.00 R 20	220	14.5	3250	11.83
295/90 R 20	220	14.5	3250	11.83
11R22.5	220	14.5	3250	11.83
10.00 R 20	230	15.0	3250	13.00
295/80 R 22.5	230	15.0	3250	13.00
295/90 R 20	230	15.0	3250	13.00





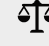
TZA 2



 Tyre Size	 Width in mm	 NSD in mm	 Length in mm	 Avg wt / belt in Kg
10.00 R 20	210	15.0	3250	11.67
295/90 R 20	210	15.0	3250	11.67
10.00 R 20	220	15.0	3250	11.83
11R22.5	220	15.0	3250	11.83
295/90 R 20	220	15.0	3250	11.83
295/80 R 22.5	240	15.0	3250	13.67





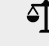
TZE 2



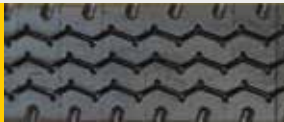
 Tyre Size	 Width in mm	 NSD in mm	 Length in mm	 Avg wt / belt in Kg
10.00 R 20	210	15.0	3250	11.67
10.00 R 20	220	15.0	3250	12.32
11R22.5	220	15.0	3250	12.32
295/90 R 20	220	15.0	3250	12.32
10.00 R 20	230	15.0	3250	12.87
295/80 R 22.5	230	15.0	3250	12.87
295/90 R 20	230	15.0	3250	12.87
295/80 R 22.5	240	15.0	3250	13.33
295/80 R 22.5	250	15.0	3250	13.98
295/80 R 22.5	260	15.0	3250	14.04






T159



 Tyre Size	 Width in mm	 NSD in mm	 Length in mm	 Avg wt / belt in Kg
10.00 R 20	210	12.5	3250	10.00
295/90 R 20	210	12.5	3250	10.00
10.00 R 20	220	12.5	3250	10.43
11R22.5	220	12.5	3250	10.43
295/90 R 20	220	12.5	3250	10.43
10.00 R 20	230	12.5	3250	10.90
295/80 R 22.5	230	12.5	3250	10.90
295/90 R 20	230	12.5	3250	10.90
11.00R20	240	12.5	3400	12.07
295/80 R 22.5	240	12.5	3250	11.53





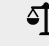
TZY L



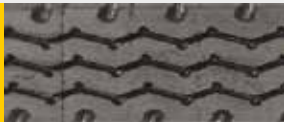
 Tyre Size	 Width in mm	 NSD in mm	 Length in mm	 Avg wt / belt in Kg
10.00 R 20	210	14.5	3250	10.93
10.00 R 20	220	14.5	3250	11.43
11R22.5	220	14.5	3250	11.43
295/90 R 20	220	14.5	3250	11.43
10.00 R 20	230	14.5	3250	12.07
11.00R20	230	14.5	3400	12.62
295/80 R 22.5	230	14.5	3250	12.07
295/90 R 20	230	14.5	3250	12.07
11.00R20	240	14.5	3400	13.11
295/80 R 22.5	240	14.5	3250	12.53




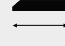

TZA 1



 Tyre Size	 Width in mm	 NSD in mm	 Length in mm	 Avg wt / belt in Kg
10.00 R 20	220	15.0	3250	11.86
11R22.5	220	15.0	3250	11.86
295/90 R 20	220	15.0	3250	11.86
10.00 R 20	230	15.0	3250	12.22
295/80 R 22.5	230	15.0	3250	12.22
295/90 R 20	230	15.0	3250	12.22




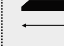
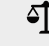
ST



 Tyre Size	 Width in mm	 NSD in mm	 Length in mm	 Avg wt / belt in Kg
8.25R20	195	14.5	3000	9.23
10.00R20	215	14.5	3250	11.86
295/90 R 20	215	14.5	3250	11.86

TZE



 Tyre Size	 Width in mm	 NSD in mm	 Length in mm	 Avg wt / belt in Kg
9.00 R 20	200	13.0	3140	10.10
10.00 R 20	210	13.0	3250	10.80
295/90 R 20	210	13.0	3250	10.80



Elgi Rubber Company Limited

S.F No. 164/2, Pollachi Road, SIDCO Industrial Estate, Kurichi - Coimbatore - 641 021 - India

+91 (422) 232 1000 - info@in.elgirubber.com - www.elgirubber.com

Truck & Bus - Radial Tyres








Drive Wheel _____








TDA



 Tyre Size	 Width in mm	 NSD in mm	 Length in mm	 Avg wt / belt in Kg
10.00 R 20	220	18.0	3250	13.73
11R22.5	220	18.0	3250	13.73
295/90 R 20	220	18.0	3250	13.73
10.00 R 20	230	18.0	3250	14.50
295/90 R 20	230	18.0	3250	14.50
295/80 R 22.5	230	18.0	3250	14.50





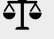
TDE 3 L



 Tyre Size	 Width in mm	 NSD in mm	 Length in mm	 Avg wt / belt in Kg
10.00 R 20	210	13.5	3250	11.03
295/90 R 20	210	13.5	3250	11.03
295/90 R 20	220	13.5	3250	11.77
10.00 R 20	220	13.5	3250	11.77
11R22.5	220	13.5	3250	11.77






T167 L



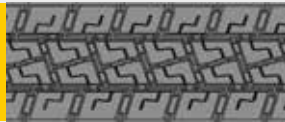
 Tyre Size	 Width in mm	 NSD in mm	 Length in mm	 Avg wt / belt in Kg
10.00 R 20	210	14.0	3250	10.96
295/90 R 20	210	14.0	3250	10.96
10.00 R 20	220	14.0	3250	11.51
11R22.5	220	14.0	3250	11.51
295/90 R 20	220	14.0	3250	11.51
10.00 R 20	230	14.0	3250	11.83
295/90 R 20	230	14.0	3250	11.83
295/80 R 22.5	230	14.0	3250	11.83






TDE 3



 Tyre Size	 Width in mm	 NSD in mm	 Length in mm	 Avg wt / belt in Kg
10.00 R 20	220	16.0	3250	13.17
11R22.5	220	16.0	3250	13.17
295/90 R 20	220	16.0	3250	13.17
10.00 R 20	230	16.0	3250	13.77
295/90 R	230	16.0	3250	13.77
295/80 R 22.5	230	16.0	3250	13.77






RDR1



 Tyre Size	 Width in mm	 NSD in mm	 Length in mm	 Avg wt / belt in Kg
10.00 R 20	220	13.5	3250	11.25
11R22.5	220	13.5	3250	11.25
295/90 R 20	220	13.5	3250	11.25
10.00 R 20	230	13.5	3250	11.70
295/90 R 20	230	13.5	3250	11.70
295/85 R 22.5	230	13.5	3250	11.70

TDYL



 Tyre Size	 Width in mm	 NSD in mm	 Length in mm	 Avg wt / belt in Kg
10.00 R 20	220	14.5	3250	11.96
11R22.5	220	14.5	3250	11.96
295/90 R 20	220	14.5	3250	11.96
10.00 R 20	230	14.5	3250	12.32
295/90 R 20	230	14.5	3250	12.32
295/80 R 22.5	230	14.5	3250	12.32



Elgi Rubber Company Limited

S.F No. 164/2, Pollachi Road, SIDCO Industrial Estate, Kurichi - Coimbatore - 641 021 - India

+91 (422) 232 1000 - info@in.elgirubber.com - www.elgirubber.com

Truck & Bus - Bias Tyres



All Wheel






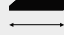
AFS09



 Tyre Size	 Width in mm	 NSD in mm	 Length in mm	 Avg wt / belt in Kg
10.00 - 20	205	13.5	3250	10.43
295/95 D 20	205	13.5	3250	10.43

TSM



 Tyre Size	 Width in mm	 NSD in mm	 Length in mm	 Avg wt / belt in Kg
8.25 - 20	180	13.5	3000	8.67
10.00 - 20	210	13.5	3250	10.86
295/95 D 20	210	13.5	3250	10.86





FT



 Tyre Size	 Width in mm	 NSD in mm	 Length in mm	 Avg wt / belt in Kg
9.00 - 20	195	14.5	3140	10.16
10.00 - 20	205	14.5	3250	11.68
295/95 D 20	205	14.5	3250	11.68

CH



 Tyre Size	 Width in mm	 NSD in mm	 Length in mm	 Avg wt / belt in Kg
7.50 - 20	170	13.0	3000	8.10
8.25 - 20	170	13.0	3000	8.10
7.50 - 20	170	11.0	3000	7.32
8.25 - 20	170	11.0	3000	7.32
8.25 - 20	180	13.5	3000	8.53
8.25 - 20	190	13.5	3000	8.64
9.00 - 20	200	13.5	3140	10.30
10.00 - 20	200	13.5	3250	10.66
10.00 - 20	210	13.5	3250	11.05
295/95 D 20	210	13.5	3250	11.05
10.00 - 20	220	13.5	3250	11.18
295/95 D 20	220	13.5	3250	11.18




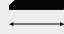

HM



 Tyre Size	 Width in mm	 NSD in mm	 Length in mm	 Avg wt / belt in Kg
10.00 - 20	205	13.5	3250	11.25
295/95 D 20	205	13.5	3250	11.25

XL



 Tyre Size	 Width in mm	 NSD in mm	 Length in mm	 Avg wt / belt in Kg
10.00 - 20	205	13.5	3250	11.25
295/95 D 20	205	13.5	3250	11.25
10.00 - 20	215	13.5	3250	11.47
295/95 D 20	215	13.5	3250	11.47



Elgi Rubber Company Limited

S.F No. 164/2, Pollachi Road, SIDCO Industrial Estate, Kurichi - Coimbatore - 641 021 - India

+91 (422) 232 1000 - info@in.elgirubber.com - www.elgirubber.com

Truck & Bus - Bias Tyres





Drive Wheel _____



DFS04



 Tyre Size	 Width in mm	 NSD in mm	 Length in mm	 Avg wt / belt in Kg
10.00 - 20	205	14.0	3250	10.33
295/95 D 20	205	14.0	3250	10.33

XB



 Tyre Size	 Width in mm	 NSD in mm	 Length in mm	 Avg wt / belt in Kg
10.00 - 20	205	15.0	3250	10.99
295/95 D 20	205	15.0	3250	10.99
10.00 - 20	215	15.0	3250	11.51
295/95 D 20	215	15.0	3250	11.51

TZT



 Tyre Size	 Width in mm	 NSD in mm	 Length in mm	 Avg wt / belt in Kg
10.00 - 20	205	15.0	3250	10.92
295/95 D 20	205	15.0	3250	10.92
10.00 - 20	210	14.0	3250	10.50
295/95 D 20	210	14.0	3250	10.50
10.00 - 20	215	16.0	3250	13.23
295/95 D 20	215	16.0	3250	13.23




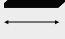

JT



 Tyre Size	 Width in mm	 NSD in mm	 Length in mm	 Avg wt / belt in Kg
7.50-20	170	14.0	3000	8.27
8.25-20	185	15.0	3000	9.09
9.00-20	195	15.0	3140	10.30
10.00 - 20	205	15.0	3250	11.12
295/95 D 20	205	15.0	3250	11.12
10.00 - 20	215	15.0	3250	11.63
295/95 D 20	215	15.0	3250	11.63


TSL



 Tyre Size	 Width in mm	 NSD in mm	 Length in mm	 Avg wt / belt in Kg
10.00 - 20	215	15.0	3250	11.41
295/95 D 20	215	15.0	3250	11.41

JT LN



 Tyre Size	 Width in mm	 NSD in mm	 Length in mm	 Avg wt / belt in Kg
10.00 - 20	205	11.0	3250	8.29
295/95 D 20	205	11.0	3250	8.29
8.25 - 20	185	11.0	3000	6.90



Elgi Rubber Company Limited

S.F No. 164/2, Pollachi Road, SIDCO Industrial Estate, Kurichi - Coimbatore - 641 021 - India

+91 (422) 232 1000 - info@in.elgirubber.com - www.elgirubber.com




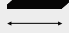

Truck Speciality Tyres



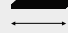
Truck - Speciality Tyres






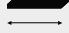

TLL

 Tyre Size	 Width in mm	 NSD in mm	 Length in mm	 Avg wt / belt in Kg
9.00-20	195	16.5	3140	10.71
10.00-20	205	14.0	3250	10.21
10.00-20	210	16.0	3250	11.83
295/95 D 20	210	16.0	3250	11.83
10.00-20	220	16.0	3250	12.67
295/95 D 20	220	16.0	3250	12.67




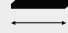

TRM

 Tyre Size	 Width in mm	 NSD in mm	 Length in mm	 Avg wt / belt in Kg
10.00-20	205	15.0	3250	11.08
10.00-20	210	15.0	3250	11.28
295/95 D 20	210	15.0	3250	11.28
11.00-20	240	18.0	3400	15.67
12.00-20	240	18.0	3400	15.67
12.00-24	240	18.0	3750	17.29






TRL

 Tyre Size	 Width in mm	 NSD in mm	 Length in mm	 Avg wt / belt in Kg
12.00-24	240	22.0	3750	21.19
12.00-20	240	22.0	3400	19.21
11.00-20	240	22.0	3400	19.21






TRL L

 Tyre Size	 Width in mm	 NSD in mm	 Length in mm	 Avg wt / belt in Kg
12.00-24	240	16.0	3750	16.58
12.00-20	240	16.0	3400	15.03
11.00-20	240	16.0	3400	15.03

TRM 2

 Tyre Size	 Width in mm	 NSD in mm	 Length in mm	 Avg wt / belt in Kg
11.00 - 20	240	18.0	3400	14.96
12.00 - 20	240	18.0	3400	14.96
12.00 - 24	240	18.0	3750	16.50

TWL

 Tyre Size	 Width in mm	 NSD in mm	 Length in mm	 Avg wt / belt in Kg
11.00 - 20	240	22.0	3400	18.56
12.00 - 20	240	22.0	3400	18.56
12.00 - 24	240	22.0	3750	20.48



CH					RT					FT				
Tyre Size	Width in mm	NSD in mm	Length in mm	Avg wt / belt in Kg	Tyre Size	Width in mm	NSD in mm	Length in mm	Avg wt / belt in Kg	Tyre Size	Width in mm	NSD in mm	Length in mm	Avg wt / belt in Kg
155 / 80 D 12	120	11.0	3400	4.93	195 D15	150	11.0	2350	4.44	7.00-15	150	14.0	2350	5.83
155 D 12	120	11.0	3400	4.93	195 R15	150	11.0	2350	4.44	7.00-15	150	14.0	2350	5.83
165D12	120	11.0	3400	4.93	195/80 R15	150	11.0	2350	4.44	7.00R15	150	14.0	2350	5.83
6.40 -15	130	12.0	2200	3.76	7.00-15	150	11.0	2350	4.44	7.00R16	150	14.0	2350	5.83
6.00-16	130	12.0	2200	3.76	7.00-16	150	11.0	2350	4.44	7.50-16	160	14.0	2480	6.18
165D14	130	12.0	2200	3.76	7.00R15	150	11.0	2350	4.44	8.25-16	170	14.0	2620	6.71
185D13	140	11.0	3800	7.11	7.00R16	150	11.0	2350	4.44					
185D14	140	11.0	3800	7.11	7.50-16	160	11.0	2480	5.11					
6.40 -15	140	11.0	3800	7.11										
185D14	150	11.0	2350	4.96										
185R14	150	11.0	2350	4.96										
185R16	150	11.0	2350	4.96										
195 D15	150	11.0	2350	4.96										
195 R15	150	11.0	2350	4.96										
195/80 R15	150	11.0	2350	4.96										
7.00-15	150	11.0	2350	4.96										
7.00-16	150	11.0	2350	4.96										
7.00R15	150	11.0	2350	4.96										
7.00R16	150	11.0	2350	4.96										
7.50-16	160	11.0	2480	5.48										
7.50R16	160	11.0	2480	5.48										
8.25-16	170	11.0	2580	6.30										
8.25-16	170	13.0	2620	7.10										
8.25-16	180	13.5	2620	7.50										

JT					TSM					TTX				
Tyre Size	Width in mm	NSD in mm	Length in mm	Avg wt / belt in Kg	Tyre Size	Width in mm	NSD in mm	Length in mm	Avg wt / belt in Kg	Tyre Size	Width in mm	NSD in mm	Length in mm	Avg wt / belt in Kg
7.00-16	160	14.0	2480	5.27	7.50-16	160	11.0	2480	5.33	215 R 15	170	12.0	2200	5.06
7.50-16	160	14.0	2480	6.27	8.25-16	170	13.5	2620	7.18	215R14	170	12.0	2200	5.06
8.25-16	170	14.0	2580	7.07	8.25-16	180	13.5	2620	7.57	205R15	170	12.0	2200	5.06
8.25-16	185	15.0	2580	7.82										

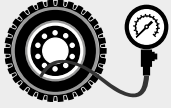
T159					UM					XM				
Tyre Size	Width in mm	NSD in mm	Length in mm	Avg wt / belt in Kg	Tyre Size	Width in mm	NSD in mm	Length in mm	Avg wt / belt in Kg	Tyre Size	Width in mm	NSD in mm	Length in mm	Avg wt / belt in Kg
235/75R17.5	200	12.5	2450	7.11	7.00 - 15	150	13.0	2350	5.31	155 / 80 D 12	120	10.0	3400	5.30
235/75R17.5	210	12.5	2450	7.52	7.00 - 16	150	13.0	2350	5.31	155 D 12	120	10.0	3400	5.30
					7.00R15	150	13.0	2350	5.31	165D12	120	10.0	3400	5.30
					7.00R16	150	13.0	2350	5.31					
					7.50 - 16	160	13.5	2480	6.13					

TZA 2					XB					TZT1				
Tyre Size	Width in mm	NSD in mm	Length in mm	Avg wt / belt in Kg	Tyre Size	Width in mm	NSD in mm	Length in mm	Avg wt / belt in Kg	Tyre Size	Width in mm	NSD in mm	Length in mm	Avg wt / belt in Kg
8.25R16	170	13.5	2620	7.07	7.50-16	160	11.0	2480	5.06	8.25R16	170	13.5	2620	6.71
					7.00-16	160	11.0	2480	5.06	8.25R16	180	13.5	2620	7.10

Tips to Enhance Tyre Life



1. Inflate tyres before loading the vehicle.



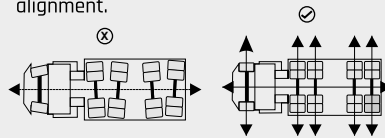
2. Distribute the load evenly in the Vehicle.



4. Rotate the tyre position periodically.



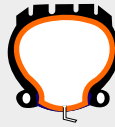
5. At regular interval correct the wheel alignment.



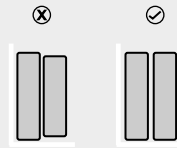
7. Remove Tyres for Retread at Tread Wear Indicator (TWI) Mark.



8. Use New Tube and Flap in Retread Tyres.



3. Match the dual tyres in height.



6. Remove trapped stones in between the Dual Tyres and in Tread Grooves.



Why Kooltread

- 35+ Years of experience in the Industry
- Millions of satisfied customers
- India's largest Retreading Network.
- Products tailored for Indian conditions
- Low running cost per kilometer
- Higher number of retreads
- Higher mileage in each retreads

Contact Us



Elgi Rubber Company Limited

S.F No. 164/2, Pollachi Road, SIDCO Industrial Estate, Kurichi - Coimbatore - 641 021 - India
+91 (422) 232 1000 - info@in.elgirubber.com - www.elgirubber.com