



Retread Curing Systems



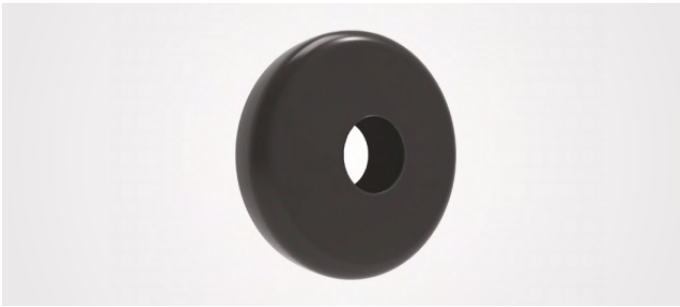
Curing products that consistently deliver a lower cost-per-cure
in the modern retreading system

Increase in productivity and decrease in mis-cures to improve the bottom line

Greater elasticity & high heat resistance

ULTRA Series

Outside Envelopes



- Made with state of the art compression molding technology.
- Improved compound for superior heat tear resistance and thermal conductivity.
- Profile designed for optimum fit to the tyre.
- Reinforced valve area to prevent failure at the valve base area.
- Unique bead profile to reduce tear during installation.
- Lower cost per cure.

Catalogue Number	Description	OD (inch)	Section Width (inch)	Bead to Bead (inch)	Quantity Per Box	UOM Per Pallet
DM31 UX* - 2	2906 - 24	29	06	24	2	72
DM32 UX* - 2	2906 - 21	29	06	21	2	72
DM34 UX* - 2	2906 - 19	29	06	19	2	72
DM36 UX* - 2	2906 - 15	29	06	15	2	120
DM60 UX* - 2	3206 - 26	32	06	26	2	72
DM61 UX* - 2	3206 - 23	32	06	23	2	72
DM62 UX* - 2	3206 - 21	32	06	21	2	72
DM63 UX* - 2	3206 - 19	32	06	19	2	72
DM75 UX* - 2	3507 - 29	35	07	29	2	36
DM76 UX* - 2	3507 - 26	35	07	26	2	36
DM77 UX* - 2	3507 - 23	35	07	23	2	36
DM80 UX* - 2	3807 - 30	38	07	30	2	36
DM81 UX* - 2	3807 - 25	38	07	25	2	36
DM82 UX* - 2	3807 - 22	38	07	22	2	36
DN03 UX* - 2	4008 - 32	40	08	32	2	36
DN04 UX* - 2	4008 - 29	40	08	29	2	36
DN05 UX* - 2	4008 - 27	40	08	27	2	36
DN08 UX* - 2	4008 - 22	40	08	27	2	72
DN09 UX* - 2	4010 - 34	40	10	34	2	36
DN20 UX* - 2	4208 - 34	42	08	34	2	36
DN21 UX* - 2	4208 - 32	42	08	32	2	36
DN23 UX* - 2	4208 - 28	42	08	28	2	36
DN24 UX* - 2	4208 - 25	42	08	25	2	36

Catalogue Number	Description	OD (inch)	Section Width (inch)	Bead to Bead (inch)	Quantity Per Box	UOM Per Pallet
DN30 UX* - 2	4210 - 36	42	10	36	2	36
DN31 UX* - 2	4210 - 34	42	10	34	2	36
DN32 UX* - 2	4210 - 32	42	10	32	2	36
DN33 UX* - 2	4210 - 30	42	10	30	2	36
DN34 UX* - 2	4210 - 27	42	10	27	2	36
DN46 UX* - 2	4410 - 36	42	10	36	2	36
DN47 UX* - 2	4410 - 34	44	10	34	2	36
DN48 UX* - 2	4410 - 31	44	10	31	2	36
DN49 UX* - 2	4410 - 29	44	10	29	2	36
DN50 UX* - 2	4410 - 28	44	10	28	2	36
DN55 UX* - 2	4412 - 38	44	12	38	2	36
DN56 UX* - 2	4412 - 36	44	12	36	2	36
DN57 UX* - 2	4412 - 34	44	12	34	2	36
DN58 UX* - 2	4412 - 32	44	12	32	2	36
DN59 UX* - 2	4412 - 30	44	12	30	2	36
DN65 UX* - 2	4513 - 44	45	13	44	2	36
DN66 UX* - 2	4513 - 43	45	13	43	2	36
DN67 UX* - 2	4513 - 37	45	13	37	2	36
DN68 UX* - 2	4513 - 35	45	13	35	2	36
DN69 UX* - 2	4513 - 33	45	13	33	2	36

X

* in Catalogue No. denotes

o - no value

1-1 - with straight base value

1-2 - with wide base value

2-1 - with bent base value

Inside Envelopes



- Easy to fit enveloping system.
- Formed with compression moulding process.
- Ensures better finish on beads and other repairs in inner liner.
- Enhances envelope service life.
- Ensures a strong curing seal with added inner liner protection.

Catalogue Number	Description	OD (inch)	Section Width (inch)	Bead to Bead (inch)	Quantity Per Box	UOM Per Pallet
DP34 U - 1	2907 - 17.5	29	07	17.5	1	72
DP36 U - 1	2907 - 19.5*	29	07	19.5	1	
DP46 U - 1	3208 - 19.5	32	08	19.5	1	36
DP68 U - 1	3508 - 22.5	35	08	22.5	1	36
DP75 U - 1	3808 - 20.0	38	08	20.0	1	36
DP77 U - 1	3808 - 22.5	38	08	22.5	1	36

Catalogue Number	Description	OD (inch)	Section Width (inch)	Bead to Bead (inch)	Quantity Per Box	UOM Per Pallet
DP78 U - 1	3808 - 24.5	38	08	24.5	1	36
DQ04 U - 1	4008 - 20.0*	40	08	20.0	1	
DQ07 U - 1	4008 - 22.5	40	08	22.5	1	36
DQ09 U - 1	4008 - 24.5*	40	08	24.5	1	
DQ21 U - 1	4208 - 24.5	42	08	24.5	1	36
DQ27 U - 1	4210 - 22.5	42	10	22.5	1	36

* To be developed

FlexSeal System

- Increases productivity, envelope life and customer's bottom line.
- Seamlessly molded rubber bands to ensure a perfect seal.
- FlexSeal band and gasket is designed for better sealing on the bead area of the radial tyre for a uniform sealing system.

FlexSeal Gaskets



Catalogue Number	Description	Quantity Per Box	UOM Per Pallet
DD11 F - 2	FG 1 - 16.5*	2	72
DD11 H - 2	FG 1 - 17.5	2	72
DD11 J - 2	FG 1 - 19.5	2	72
DD11 K - 2	FG 1 - 20.0	2	72
DD11 N - 2	FG 1 - 22.5	2	72
DD11 P - 2	FG 1 - 24.5	2	72

* To be developed

FlexSeal Bands



Catalogue Number	Description	Quantity Per Box	UOM Per Pallet
MC41 F - 2	FB1 - 16.5*	2	60
MC41 H - 2	FB1 - 17.5	2	60
MC41 J - 2	FB1 - 19.5	2	60
MC41 K - 2	FB1 - 20.0	2	60
MC41 N - 2	FB1 - 22.5	2	60
MC41 P - 2	FB1 - 24.5	2	60

SnapSeals

- Adjusting bolts with heavy duty thread for better envelope seal.
- Ring tabs of exact length.
- Sliding shield on the outer ring body to prevent pinched envelopes.



Catalogue Number	Description	Quantity Per Box
MC36 C - 1	SS 1 - 15	1
MC36 F - 1	SS 1 - 16	1
MC36 H - 1	SS 1 - 17.5	1
MC36 J - 1	SS 1 - 19.5	1
MC36 K - 1	SS 1 - 20	1
MC36 N - 1	SS 1 - 22.5	1
MC36 P - 1	SS 1 - 24	1

Curing Tubes

- High quality heat resistant.
- Features a cured-in valve.



Catalogue Number	Description	Quantity Per Box	Catalogue Number	Description	Quantity Per Box
DI01 - 2	4.00 X 8	2	DI49 - 1	10.00 X 20	1
DI06 - 2	4.50 X 10	2	DI50 - 1	11.00 X 20	1
DI11 - 2	4.50 X 12	2	DI51 - 1	12.00 X 20	1
DI15 - 2	5.20 X 14	2	DI55 - 1	11.00 X 22.5	1
DI20 - 2	5.90 X 15	2	DI56 - 1	12.00 X 22.5	1
DI21 - 2	7.00 X 15	2	DI65 - 1	12.00 X 24	1
DI26 - 2	6.00 X 16	2	DI68 - 1	14.00 X 25	1
DI27 - 2	7.50 X 16	2	DI75 - 1	12.40 X 28	1
DI28 - 2	8.25 X 16	2	DI76 - 1	13.60 X 28	1
DI29 - 1	9.00 X 16	1	DI77 - 1	14.90 X 28	1
DI45 - 1	8.00 X 19	1	DI78 - 1	16.90 X 28	1
DI47 - 1	8.25 X 20	1	DI85 - 1	16.90 X 30	1
DI48 - 1	9.00 X 20	1			

Curing Rims

- Safety locking mechanism.
- Rigid construction.
- Available in a range of sizes.



Catalogue Number	Description	Quantity Per Box	Catalogue Number	Description	Quantity Per Box
MC70 2 AA	CR 2 - 12 X 4	1	MC70 2 AL	CR 2 - 20 X 7.5	1
MC70 2 AB	CR 2 - 12 X 4.5	1	MC70 2 AV	CR 2 - 20 X 8	1
MC70 2 AC	CR 2 - 12 X 4	1	MC70 2 AM	CR 2 - 20 X 8.5	1
MC70 2 AD	CR 2 - 12 X 5.5	1	MC70 2 AN	CR 2 - 20 X 9	1
MC70 2 AE	CR 2 - 12 X 4.5	1	MC70 2 AO	CR 2 - 20 X 10	1
MC70 2 AF	CR 2 - 12 X 6	1	MC70 2 AP	CR 2 - 22.5 X 10	1
MC70 2 AW	CR 2 - 12 X 6.5	1	MC70 2 AQ	CR 2 - 12.5 X 11.75	1
MC70 2 AG	CR 2 - 12 X 6.5	1	MC70 2 AR	CR 2 - 12.5 X 8.25	1
MC70 2 AH	CR 2 - 12 X 7.5	1	MC70 2 AS	CR 2 - 22.5 X 9	1
MC70 2 AI	CR 2 - 12 X 6	1	MC70 2 AT	CR 2 - 24 X 8.5	1
MC70 2 AJ	CR 2 - 12 X 6.5	1	MC70 2 AU	CR 2 - 24 X 10	1
MC70 2 AK	CR 2 - 12 X 7	1			

Envelope Valves

- Provides excellent venting during cure cycle.
- Available with narrow and wide base options based on the tread type requirements.
- Easy to use and fits into any standard size envelope.
- Engineered to deliver superior air evacuation and longevity.



Catalogue Number	Description	Type
PA01 - 1	Straight Valve - Narrow Base	B
PA01 - 2	Straight Valve - Wide Base	A
PA03 - 1	Bent Valve	C

Wicking Pad

Rubber

- High elasticity compound eliminating tread deformations.
- More durable than cloth wick pads and can be used repeatedly.
- Eliminates use of venting poly underneath.
- Excellent thermal resistance, reducing aging for extended use.



Catalogue Number	Dimension	Size	Quantity Per Box
DL01 - X*	55.50 x 6.75	A	15/4
DL03 - X*	48.75 x 6.75	B	15/4
DL05 - X*	29.00 x 5**	C	15/4

*X in Catalogue No. denotes box quantity 15/4

Fabric Reinforced Rubber

- Molded rubber pad with grooves that wicks the air eliminating nylon wicking pads.
- No poly underneath.
- Can be attached to the underside of an envelope using a valve.



Catalogue Number	Dimension	Quantity Per Box
DI21 - X*	6"W x 22"L	15/4

*X in Catalogue No. denotes box quantity 15/4

* Under Development

Envelope Repair System

- Repair compound designed for maximum envelope repair life.
- Repair cement designed for maximum adhesion with special compound.
- Envelope repair press with heat and pressure control for maximum repair cured adhesion.



Catalogue Number	Description	Quantity
EA40 - 2.2 Lbs	Envelope Repair Gum	2.2 Lbs
CH08 - 8.4 Oz	Flammable Envelope Repair Cement with Brush	8.4 Oz
CI28 = 32 Oz	Flammable Rubber Buffer	32 Oz
MC40 1 - X*	Envelope Spot Vulcaniser VE 1	
MA42	Envelope Repair Table	

*X in Catalogue No. denotes power supply specifications (V / Hz / ph)

D - 110 / 50/60 / 1
E - 220 / 50/60 / 1

Related Products



Plastic Staples & Staplers



Perforated Poly



Envelope Lube



Venting Tape