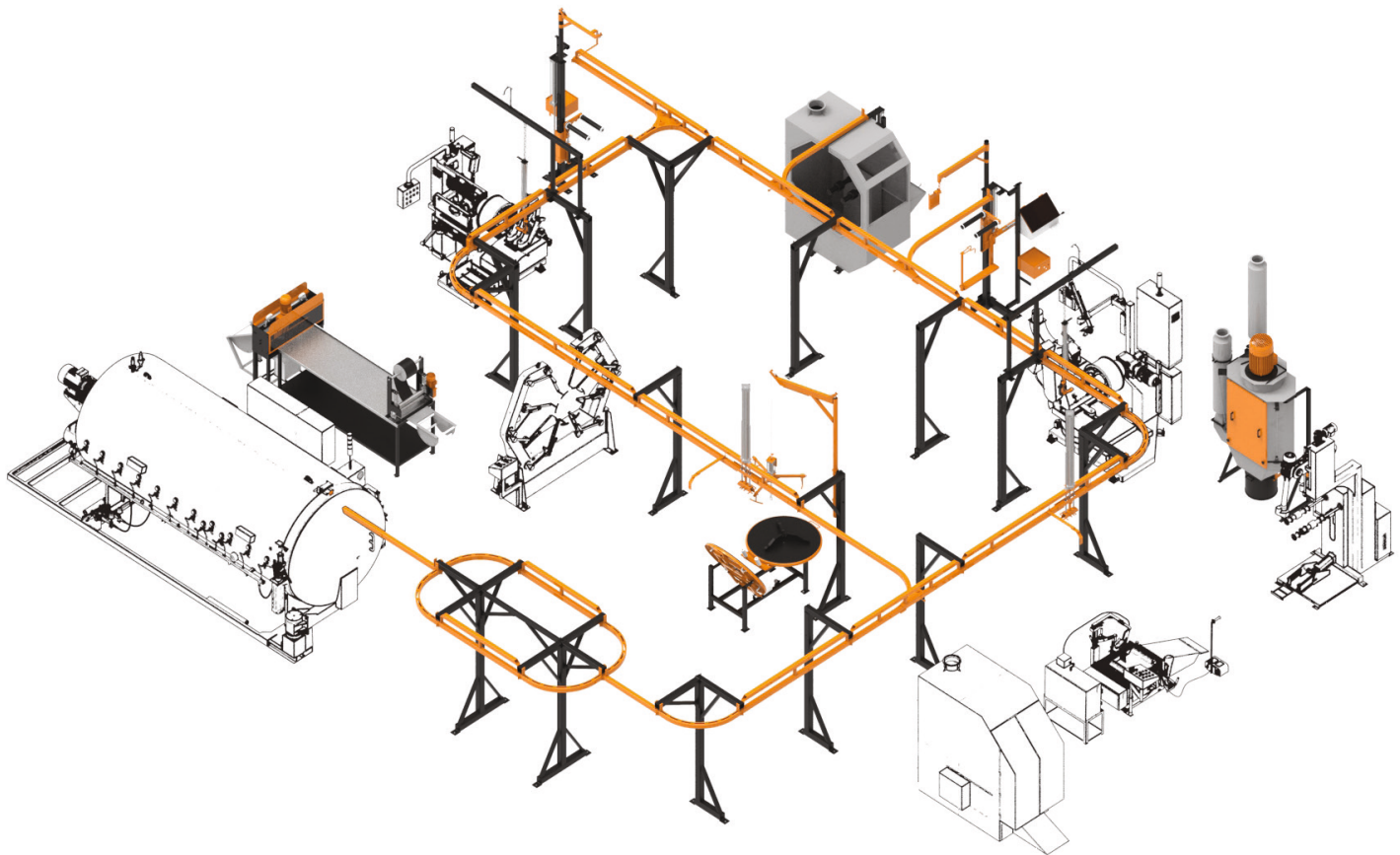




Monorail & Tyre Preparation Systems



Robust construction for years of trouble free operation

Specific designs for Commercial Truck or for OTR casings, to improve process organization, facilitate operator's work and enhance overall factory productivity.

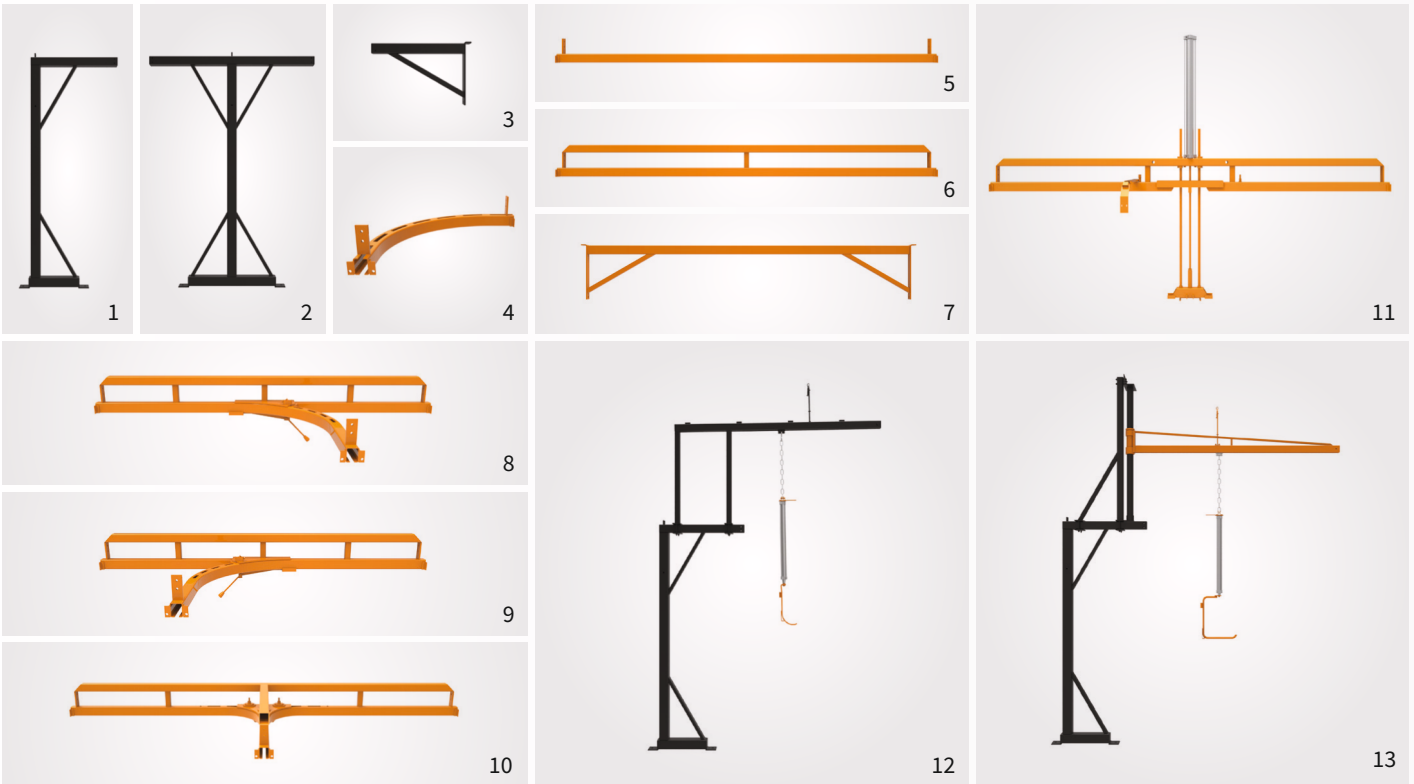
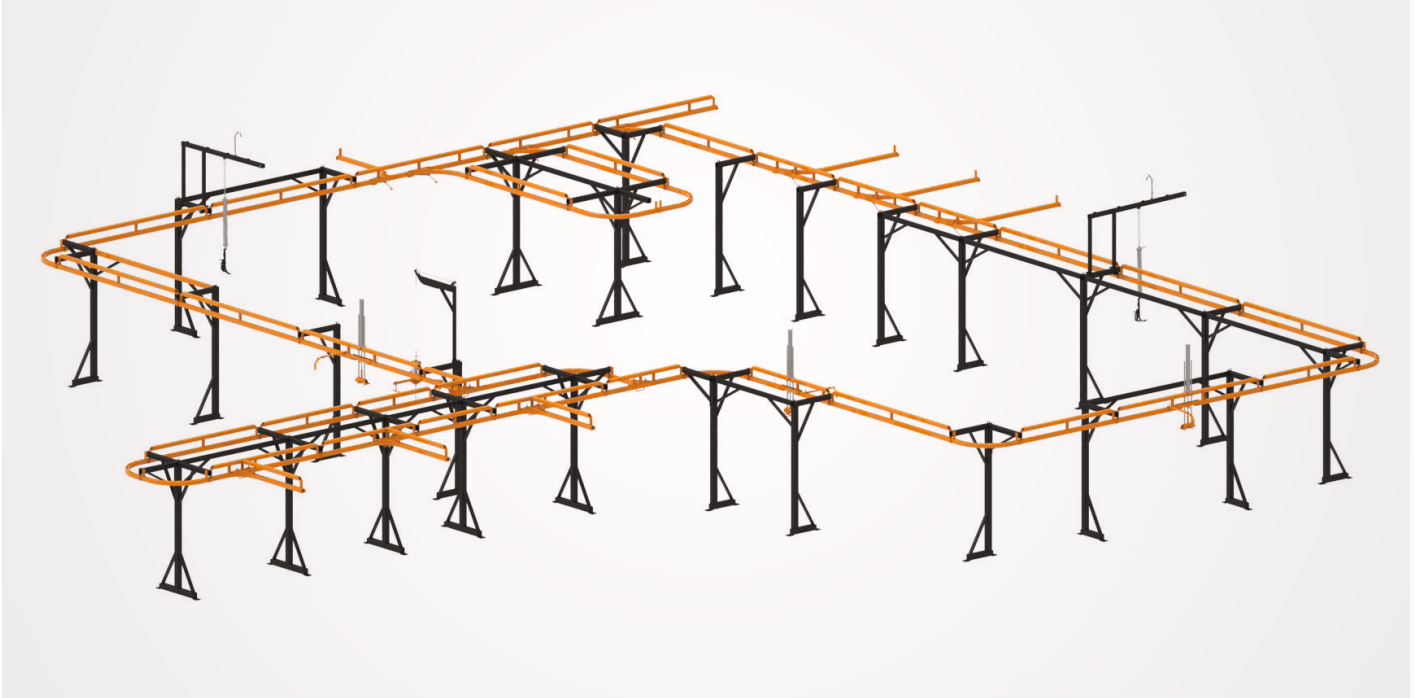
Monorail System

MS 1

Fully integrated or modular systems custom designed for each retreading application for smooth movement of casings throughout the factory process.

Can be custom designed for any factory layout.
 Multiple gateway switch options (single / 2 way / 3 way).
 Fixed Lift attachment.
 Swing Lift attachment.

In Process holding areas.
 Work station staging areas and bypasses to enhance productivity.
 Staging area and bridging for Autoclaves.



- | | |
|---|---|
| <ul style="list-style-type: none"> 1. Single monorail support column 2. Double monorail support column 3. Monorail track support arm 4. 90° curved monorail track 5. Straight monorail track 6. Straight monorail track with top support 7. Monorail support interconnection bar | <ul style="list-style-type: none"> 8. Left handed 2-way monorail track switch 9. Right handed 2-way monorail track switch 10. 3-way monorail track switch 11. Straight monorail track with lift 12. Fixed lift attachment for monorail support column 13. Swing lift attachment for monorail support column |
|---|---|

J Hooks

JH 1



Model JH 1-1/2
Catalogue No. MD60 1/2

JH 2



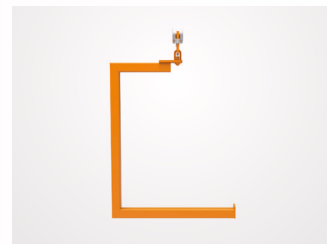
Model JH 2
Catalogue No. MD60 2

JH 3



Model JH 3
Catalogue No. MD60 3

JH 4



Model JH 4
Catalogue No. MD60 4

Initial Inspection Station

IS 1

Robust equipment for initial inspection of OTR (off-the-road) tyres.

Pneumatic tyre lift with gear motor rotation activated via foot pedal.

Sealed pneumatic system control system.



Model IS 1
Catalogue No. MA05 1

Bead Spreaders

Portable bead spreaders that facilitate small repairs or inspections.

Ergonomic and Portable bead spreader for Commercial Truck tyres.

Lever activated pneumatic action.

Will not damage tyre bead areas.

BS 1



Model BS 1
Catalogue No. MC43 1

BS 2



Model BS 2
Catalogue No. MC43 2

Dust Collection Systems

Collection and Vacuum systems for rubber buffing dust.

Mono system with 3 hp that will address up to 3 buffing stations.

Sleeve filtering system.

Drum collection unit for rubber buffing dust.

Output through flexible tubing.

Quiet operation.

Customized tubing and hoses for up to 3 buffing stations.

DCF 1



DCB 1

MD40 1 -

DCF 2



DCB 2

MD45 1 -

DCE Y



DCE X-1

MD50

X in Cat. No. denotes power
supply specifications
(V / Hz / ph)

R 220 / 60 / 3

G 380 / 50 / 3

S 380 / 60 / 3

P 415 / 50 / 3

U 440 / 60 / 3

Y in Cat. No. denotes
1/2/3/4/5/
6/7/8/9

Model
Catalogue No.

Suction Hood

Works for single and dual exhaust and for the cyclone extractor.
Robust construction made of steel.



Model
Catalogue No.

SH 1/2/3
MD55 1/2/3

Skiving Stations

Pneumatic work station for skiving Commercial Truck tyres or reinforced station for OTR stations. Equipment developed to enable skiving in an ergonomic and efficient manner.

Lever activated pneumatic lift o position tyres on the monorail.
2 Rollers for casing stability, foot activated brake for skiving.
Bead spreader to facilitate internal repairs.

Column with swivel arm to support electric grinder (does not include electric grinder).
Tool tray with rubber cover (tools not included).
Wooden tool support for skiving tools (tools not included).

SK 1



Model
Catalogue No.

SK 1
MA16 1

SK 2



Model
Catalogue No.

SK 2
MA16 2

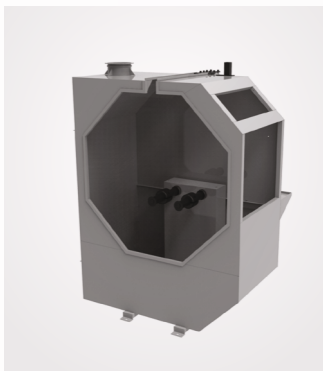
Cement Booths

The Cement booth provides for uniform application of the BVC in an efficient and contained manner to optimize application, prevent overspray and eliminate fumes.

Cement booths designed to meet the factory layout.
Rollers to lift tyres from the monorail.
Remote cement application for safety.
Foot pedal controlled rotation for ease of operation and to

enhance productivity.
Integrated lighting to help ensure an even application.
Efficient base level exhaust system to provide an efficient exhaust, with activated carbon filter to absorb cement gases.

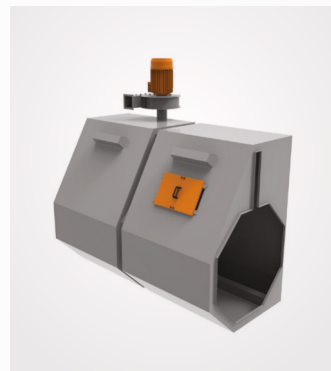
CB 1



Model
Catalogue No.

CB 1
MA21 1

CB 2



Model
Catalogue No.

CB 2
MA21 2

CB 3



Model
Catalogue No.

CB 3
MA21 3

Filling Stations

Work post developed for an efficient and ergonomic application of filling rubber of skives.

- Lever activated pneumatic cylinder to position tyres on the monorail.
- Foot pedal activated brake to hold the casing.
- Lever activated pneumatic bead spreader for the application of

- internal repairs.
- Column with swivel arm and wire rope with a counter-weight for the mini-extruder attachment (mini-extruder not included).
- Tool tray with rubber cover (tools not included).

FL 1



Model
Catalogue No.

FL 1-1
MA26 1

FL 2



Model
Catalogue No.

FL 2-1
MA26 2

Mini Extruder

ME 1/2

- Lightweight extruder ideal for Truck and OTR applications.
- Fills injuries faster than hand stitching.
- Adjustable temperature thermostat.
- Analogue and Digital models.



Catalogue No.

- MC 56 -
- MC 57 -
- MC 58 -
- MC 59 -

In Cat. No. denotes power supply specifications (V / Hz / ph)

Description

- ME 1 - With Drive
- ME 1 - Without Drive
- ME 2 - With Drive
- ME 2 - Without Drive

D 10 V, 50/60 Hz / 1 PH
E 220 V, 50/60 Hz / 1 PH

Spot Vulcaniser

VS 1

- Repairs tread, shoulder and sidewall areas of passenger and light truck tyres.
- Heats from both sides for maximum repair efficiency.



Model
Catalogue No.

VS 1
MC41 1 - A

In Cat. No. denotes power supply specifications (V / Hz / ph)

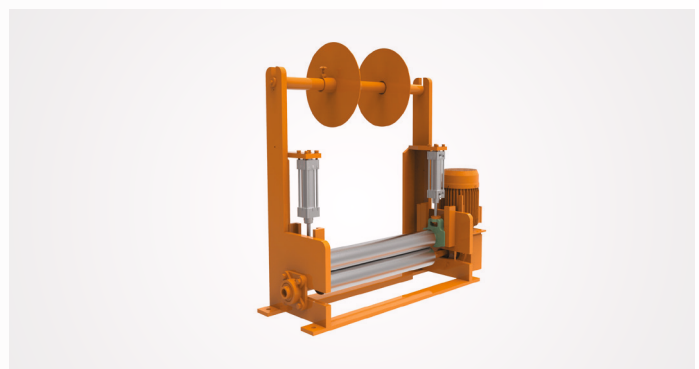
A 110/220 V, 50/60 Hz / 1 PH

Cushion Gum Application Unit

CU 1

For the application of cushion rubber on the tread band.

- Chromed, calender type bearing rollers.
- ½ hp foot pedal control.
- System of 2 pneumatic rollers that apply the cushion rubber on the tread band to ensure good adhesion.
- Raised support system for rolls of cushion rubber.



Model
Catalogue No.

CU 1
MA31 1

Precured Tread Cutting Machine

PC 1

Machine to cut tread bands with rotary disk.

- Cuts with rotating disk in seconds, to realize an ideal texture on the tread ends.
- Pneumatic system that secures the tread during the cut resulting in an accurate cut.
- Push button activated gearmotor.
- Integrated lighting to visualize the cut.
- Manufactured to match the Tread Preparation table to ensure a perfect height.

Model
Catalogue No.

PC 1
MA36 1



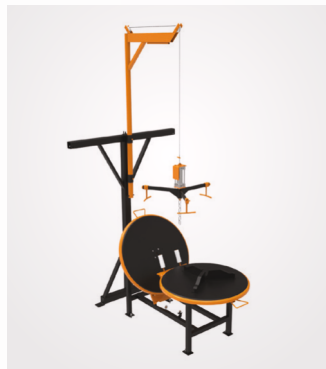
Sealing System Stations

Device designed to facilitate mounting of the innerlope, (and rim or FlexSeal as appropriate) thus reducing assembly time.

- Compact flip table with 2 rotating rubber covered tops.
- Rim support for applying dimensions (16,20,22 & 22.5).
- Pneumatic liftsystem with counter weight and pulleys to aid in

- positioning and locking curing rims.
- Lever activated pneumatic lift to position the casing on the monorail.

SE 1



Model
Catalogue No.

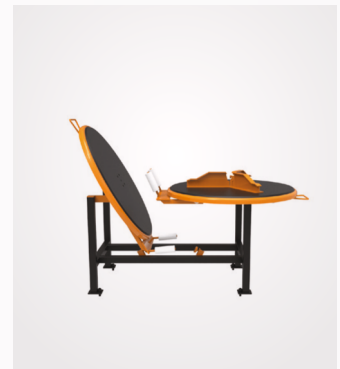
SE 1
MD30 1

SE 2



SE 2
MD30 2

SE 3



SE 3
MD30 3

Final Inspection Stations

FI 1

Robust equipment to enable a complete final inspection of Commercial Truck tyres.

- Rollers activated by gear motor.
- Pneumatic lift or positioning of tyre on the monorail.
- Tool tray with rubber cover (tools not included).

Model
Catalogue No.

FI 1
MA76 1



Tables, Stands & Cabinets



Precure Tread Preparation Table PP 1



Curing Rim Storage Stand CRS 1



Envelope Storage Rack ESR 1



Envelope Storage Rack ESR 2



Tread Storage Stand TSS 1



Tool Cabinet TCB 1



Envelope Cart



SnapSeal Ring Cart



Expandable Rim Cart

Related Products

Tyre Retreading & Repair Machinery



Tyre Sidewall Cleaner TC 6



Inspection Spreader IS 6



Buffing Machine BF 6



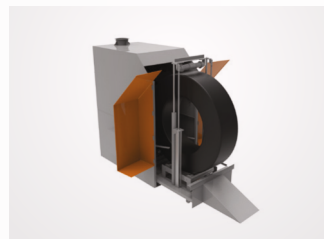
Building Machine BI 6



Envelope Spreader ES 6



Electric Autoclave EA 6



Tyre Painting Station PS 6



Tyre Repair Station TR 6

Expandable Hubs & Rims



Expandable Hub



Expandable Rim



Stems



Expandable Rim Band

Related Products

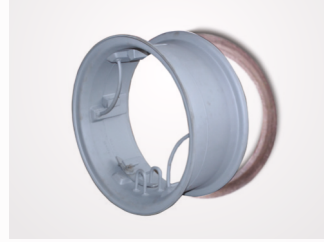
Retread Curing System



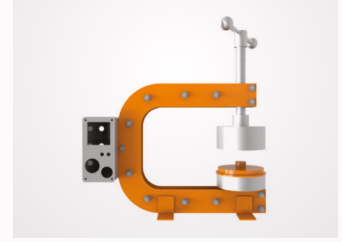
FlexSeal System



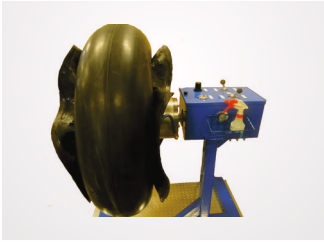
SnapSeal System



Curing Rims & Flanges



Envelope Spot Vulcaniser



Envelope Tester

Rasp Blades & Hub Assemblies



Rasp Blades



Spacers

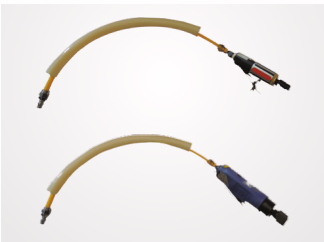


Rasp Hub Assembly



Rotary Gouges

Equipment & Tools



Air & Electric Tools



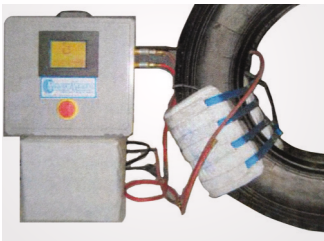
Carbides



Wire Brushes & Carbide Burrs



Aluminium Oxide Stones



Section Repair Molds



Plastic Staples & Staplers